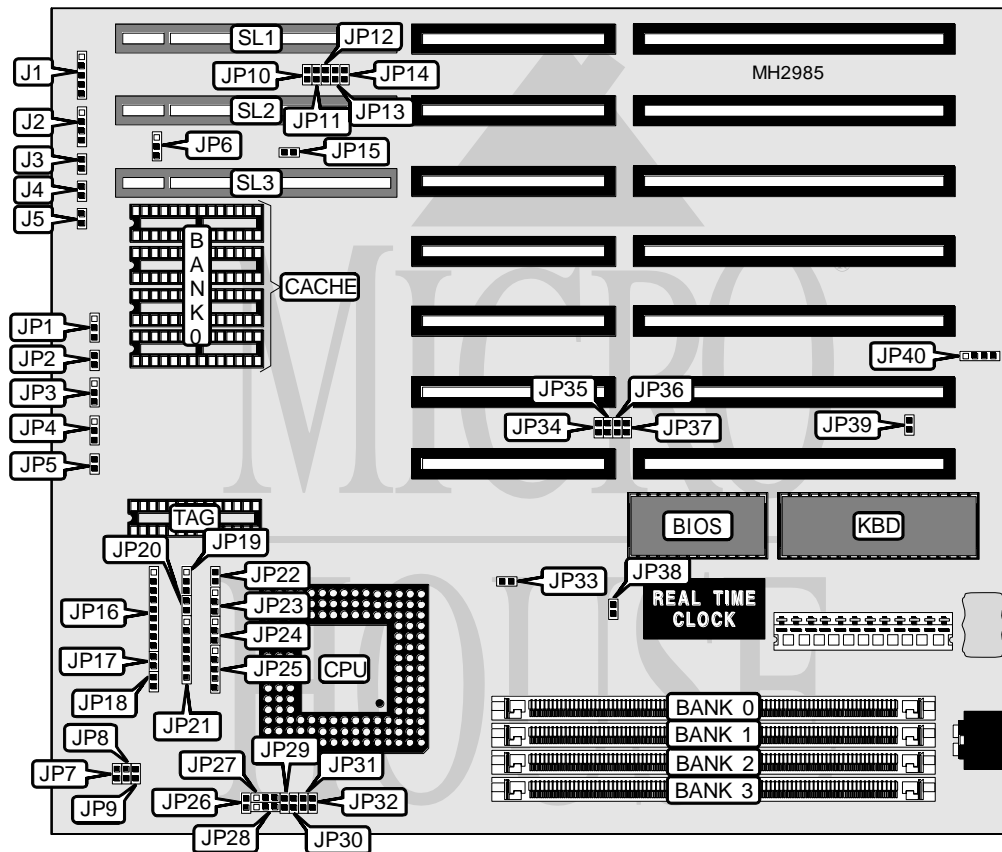


DATAEXPERT CORPORATION

EXP4045

Processor	CX486M6/80486SX/CX486M7/AM486DX/80486DX/SL80486DX/AM486DX2/ 80486DX2/SL80486DX2/80486DX4/P24D/Pentium Overdrive
Processor Speed	25/33/40/50(internal)/66(internal)/75(internal)/100(internal)MHz
Chip Set	Unidentified
Max. Onboard DRAM	128MB
Cache	128/256/512KB
BIOS	Award
Dimensions	249mm x 218mm
I/O Options	32-bit VESA local bus slots (3), green PC connector
NPU Options	None



CONNECTIONS			
Purpose	Location	Purpose	Location
Power LED & keylock	J1	Turbo LED	J5
Speaker	J2	External battery	JP40
Reset switch	J3	32-bit VESA local bus slots	SL1 - SL3
Turbo switch	J4		

Continued on next page...

DATAEXPERT CORPORATION

EXP4045

... continued from previous page

USER CONFIGURABLE SETTINGS		
Function	Jumper	Position
í Factory configured - do not alter	JP5	N/A
í Factory configured - do not alter	JP10	N/A
í Factory configured - do not alter	JP11	N/A
í Factory configured - do not alter	JP12	N/A
í Factory configured - do not alter	JP13	N/A
í Factory configured - do not alter	JP14	N/A
í Factory configured - do not alter	JP15	N/A
í Factory configured - do not alter	JP35	N/A
í Factory configured - do not alter	JP37	N/A
í Factory configured - do not alter	JP38	N/A
í Monitor type select color	JP39	Closed
í Monitor type select monochrome	JP39	Open

DRAM CONFIGURATION				
Size	Bank 0	Bank 1	Bank 2	Bank 3
1MB	(1) 256K x 36	NONE	NONE	NONE
2MB	(1) 256K x 36	(1) 256K x 36	NONE	NONE
4MB	(1) 1M x 36	NONE	NONE	NONE
8MB	(1) 1M x 36	(1) 1M x 36	NONE	NONE
12MB	(1) 1M x 36	(1) 1M x 36	(1) 1M x 36	NONE
16MB	(1) 1M x 36	(1) 1M x 36	(1) 1M x 36	(1) 1M x 36
12MB	(1) 1M x 36	NONE	(1) 2M x 36	NONE
8MB	(1) 2M x 36	NONE	NONE	NONE
16MB	(1) 2M x 36	(1) 2M x 36	NONE	NONE
24MB	(1) 2M x 36	(1) 2M x 36	(1) 2M x 36	NONE
32MB	(1) 2M x 36	(1) 2M x 36	(1) 2M x 36	(1) 2M x 36
16MB	(1) 4M x 36	NONE	NONE	NONE
32MB	(1) 4M x 36	(1) 4M x 36	NONE	NONE
64MB	(1) 4M x 36	(1) 4M x 36	(1) 4M x 36	(1) 4M x 36
32MB	(1) 8M x 36	NONE	NONE	NONE
128MB	(1) 8M x 36	(1) 8M x 36	(1) 8M x 36	(1) 8M x 36

CACHE CONFIGURATION		
Size	Bank 0	TAG
128KB	(4) 32K x 8	(1) 32K x 8
256KB	(4) 32K x 8	(1) 32K x 8
512KB	(4) 128K x 8	(1) 32K x 8

CACHE JUMPER CONFIGURATION				
Size	JP1	JP2	JP3	JP4
128KB	Open	Open	pins 2 & 3 closed	pins 1 & 2 closed
256KB	pins 1 & 2 closed	Open	pins 2 & 3 closed	pins 2 & 3 closed
512KB	pins 2 & 3 closed	Closed	pins 1 & 2 closed	pins 2 & 3 closed

Continued on next page. ...

DATAEXPERT CORPORATION

EXP4045

... continued from previous page

CPU TYPE CONFIGURATION					
Type	JP6	JP16	JP17	JP19	JP20
CX486M6	2 & 3	2 & 3, 4 & 5	Open	2 & 3	Closed
80486SX	1 & 2	1 & 2	Open	1 & 2	Open
CX486M7	2 & 3	2 & 3, 4 & 5	Closed	2 & 3	Closed
AM486DX	1 & 2	1 & 2	Closed	1 & 2	Open
80486DX	1 & 2	1 & 2	Closed	1 & 2	Open
SL80486DX	1 & 2	1 & 2	Closed	1 & 2	Closed
AM486DX2	1 & 2	1 & 2	Closed	1 & 2	Open
80486DX2	1 & 2	1 & 2	Closed	1 & 2	Open
SL80486DX2	1 & 2	1 & 2	Closed	1 & 2	Closed
80486DX4	1 & 2	1 & 2	Closed	1 & 2	Closed
P24D	1 & 2	1 & 2, 3 & 4	Closed	1 & 2	Closed
P24T	1 & 2	1 & 2	Closed	1 & 2	Closed

Note: Pins designated should be in the closed position.

CPU TYPE CONFIGURATION (CON'T)					
Type	JP21	JP22	JP23	JP24	JP25
CX486M6	2 & 3, 4 & 5	Closed	Open	Open	2 & 3, 4 & 5
80486SX	Open	Closed	Open	Open	1 & 2, 3 & 4
CX486M7	2 & 3, 4 & 5	Closed	Open	Open	2 & 3, 4 & 5
AM486DX	Open	Closed	Open	Open	1 & 2, 3 & 4
80486DX	Open	Closed	Open	Open	1 & 2, 3 & 4
SL80486DX	Open	Closed	Open	Open	1 & 2, 3 & 4
AM486DX2	Open	Closed	Open	Open	1 & 2, 3 & 4
80486DX2	Open	Closed	Open	Open	1 & 2, 3 & 4
SL80486DX2	Open	Closed	Open	Open	1 & 2, 3 & 4
80486DX4	Open	Closed	Open	Open	1 & 2, 3 & 4
P24D	Open	Open	1 & 2	1 & 2	1 & 2, 3 & 4
P24T	Open	Open	Open	Open	1 & 2, 3 & 4

Note: Pins designated should be in the closed position.

CPU TYPE CONFIGURATION (CON'T)					
Type	JP26	JP27	JP28	JP29	JP30
CX486M6	Open	Open	2 & 3	Open	Open
80486SX	Open	Open	2 & 3	Open	Open
CX486M7	Closed	Open	1 & 2	Closed	Closed
AM486DX	Closed	Open	1 & 2	Closed	Closed
80486DX	Closed	Open	1 & 2	Closed	Closed
SL80486DX	Closed	Open	1 & 2	Closed	Closed
AM486DX2	Closed	Open	1 & 2	Closed	Closed
80486DX2	Closed	Open	1 & 2	Closed	Closed
SL80486DX2	Closed	Open	1 & 2	Closed	Closed
80486DX4	Closed	Open	1 & 2	Closed	Closed
P24D	Closed	Open	1 & 2	Closed	Closed
P24T	Closed	1 & 2	1 & 2	Closed	Open

Note: Pins designated should be in the closed position.

DATAEXPERT CORPORATION

EXP4045

... continued from previous page

CPU TYPE CONFIGURATION (CON'T)				
Type	JP31	JP32	JP34	JP36
CX486M6	Open	Open	Closed	Closed
80486SX	Open	Open	Open	Open
CX486M7	Open	Open	Closed	Closed
AM486DX	Open	Open	Open	Open
80486DX	Open	Open	Open	Open
SL80486DX	Open	Open	Open	Closed
AM486DX2	Open	Open	Open	Open
80486DX2	Open	Open	Open	Open
SL80486DX2	Open	Open	Open	Closed
80486DX4	Open	Closed	Open	Closed
P24D	Open	Closed	Open	Closed
P24T	Open	Closed	Open	Closed

CPU SPEED CONFIGURATION			
Speed	JP7	JP8	JP9
25MHz	Open	Open	Closed
33MHz	Closed	Closed	Closed
40MHz	Open	Closed	Closed
50iMHz	Open	Open	Closed
66iMHz	Closed	Closed	Closed
75iMHz	Open	Open	Closed
100iMHz	Closed	Closed	Closed

CPU SPEED CONFIGURATION (80486DX4 ONLY)	
Speed	JP16
2x	pins 7 & 8 closed
2.5x	pins 8 & 9 closed
3x	Open

CPU VOLTAGE CONFIGURATION		
Speed	JP18	JP33
3.3v	Open	Open
5v	Closed	Closed